



Boxley
PARISH COUNCIL

www.boxleyparishcouncil.org.uk

Beechen Hall, Wildfell Close, Walderslade,
Chatham, Kent. ME5 9RU

☎ 01634 861237

✉ clerk@boxleyparishcouncil.org.uk

Clerk: Mrs Daniela Baylis

Assistant Clerk: Heidi Pearson

Finance Assistant: Nichola Carter

A G E N D A

To All Members of the Council, Press and Public

There will be a meeting of the Environment Committee on Monday 15 September 2025 at Beechen Hall, Wildfell Close, Walderslade, ME5 9RU at 7.30pm.

1. **Apologies and absences**

To receive and accept apologies for absence.

2. **Declaration of Interests, Dispensations, Predetermination or Lobbying**

Members are required to declare any interests, dispensations, predetermination or lobbying on items on this agenda. Members are reminded that changes to the Register of Interests should be notified to the Clerk.

3. **Motion to exclude the press and public from the meeting for all items in the Confidential Section.**

Public Session at the discretion of the Chairman. Parishioners may address the meeting with regard to any item on the Agenda (time limited to 3 minutes per person). Items not on the Agenda must be submitted to the Clerk in advance of the meeting. Non-parishioners are only able to address the meeting at the invitation of the Chairman.

4. **Minutes of the Meeting held on 14 July 2025** (Pages 3-5)

To consider the minutes and if in order sign as a true record.

5. **Matters Arising from the Minutes**

Any other matters arising from the minutes not on the agenda.

6. **Planning Applications for Consideration – DECISION**

To consider applications received. (Page 5-6).

7. **Ratifications** (Page 6)

8. **Planning Decisions, Appeals and Appeals Decisions – INFORMATION**

To receive and consider any information. See report (page 7).

9. **Highways and Byways - DECISION**

9.1 Highways Improvement Plan (separate attachment)

9.2 Junction 3 of the M2/Bluebell Hill (Page 7)

9.3 A249 Bearsted Road Major Infrastructure Project. (Page 8-10)

9.4 Boxley Village (Page 10)

9.5 Lower Thames Crossing update (Page 10-11)

9.6 A229 Bluebell Hill Road Improvements/Junction 6 of the M20 (Page 11-13)

9.7 Any Highways issues raised at the meeting.

10. **Lidsing** (Pages 13)

11. **Sandling** (Page 13-22)

12. **Policy and Procedure – Review**
None on this Agenda
13. **Parish Tour** (Page 23)
14. **Mile Stones** (Page 23-25)
15. **Speed Watch** (Page 25)
16. **Task List** (Page 29)
17. **Members and Officer's Reports**
17.1 To receive any reports or notification of issues from members (Page 14)
18. **Residents' Concerns** (Page 25-28)
19. **Daffodil Planting** (Page 28)
20. **Volunteer Groups – INFORMATION**
To receive any reports.
21. **Items for Next Agenda – DECISION**
Requests for items to be included on the next agenda to be received by the 30 September 2025.
22. **Next Meeting**
Next Environment Committee meeting 13 October 2025.

In view of the confidential nature of the item about to be transacted, it is advised that the public and press will be excluded from the meeting for the duration of the following items.

23. **Enforcement and CIL/Section 106 updates from MBC** (Page 28)
To consider any updates received.

Daniela Baylis

Daniela Baylis
Clerk to Boxley Parish Council

Date: 2025

In accordance with policy the meeting should close no later than 9.30 pm but the Chairman has power to extend it by 30 minutes.

Legislation allows for meetings to be recorded by anyone attending. Persons intending to record or who

have concerns about being recorded should please speak to the Clerk.

Supporting agenda papers for the Environment Committee Meeting 15 September 2025. The Chairman will assume that these have been read prior to the meeting.

Councillors wishing to suggest changes to any policy or procedure document in this agenda should notify the office, in writing, at least three working days in advance of the meeting to allow details to be circulated at the meeting (or in advance if particularly contentious).

Item 4. Minutes of the meeting held on the 14 July 2025

Minutes of the Boxley Parish Council Environment Committee Meeting held at Beechen Hall, Wildfell Close, Walderslade on 14 July 2025, commencing at 7.30pm.

Present: Cllrs A Brindle, I Davies, S Thompson, A Adams and N Zand along with Mrs D Baylis (Parish Clerk) and Cllr P Mclean

1 Apologies and absences

Cllrs Dines, J Akehurst, V Kellaway and V Jones.

2 Declaration of Interests, Dispensations, Predetermination or Lobbying

Cllr Thompson advised that he is a member of MBC's Planning Committee, so he would not comment on applications other than to ask questions that members might find relevant.

3 Motion to exclude the press and public from the meeting for all items in the Confidential Section.

It was proposed by Cllr I Davies, seconded by Cllr S Thompson and all agreed to exclude members of the public from all items in the Confidential Section.

Public Session at the discretion of the Chairman. Parishioners may address the meeting with regard to any item on the Agenda (time limited to 3 minutes per person). Items not on the Agenda must be submitted to the Clerk in advance of the meeting. Non-parishioners are only able to address the meeting at the invitation of the Chairman.

No members of the public were present.

4 Minutes of the Meeting held on 23 June 2025

Agreed.

5 Matters Arising from the Minutes

None raised.

6 Planning Applications for Consideration – DECISION

25/502569/FULL 20 Clarence Court, Weaving, ME14 5UP (18 July)

Loft conversion including 3no. rooflights and front and rear dormers, and alterations to fenestration. Boxley Parish Council have no material planning reasons to object to this application.

25/502695/TPOA 7 Trotwood Close, Boxley, ME5 9JU (24 July)

Tree Preservation Order application: Oak – cut back 3m up from the ground to 14m and 2.5m of the canopy back the canopy over hanging boundary.

Boxley Parish Council defer to the views of the Tree Officer.

25/502521/SUB 6 Henley Fields Weaving Kent ME14 5UY (20 July)

Submission of details pursuant to condition 3- (Biodiversity) subject to 25/500860/FULL

Boxley Parish Council have no material planning reasons to object to this application provided the level of biodiversity requirements has been met.

The Clerk was asked to contact the Case Officer establish how biodiversity requirements are monitored.

3. **Ratifications**
It was proposed by Cllr I Davies, seconded by Cllr A Brindle and agreed to ratify the planning responses made out of meeting.
4. **Planning Decisions, Appeals and Appeals Decisions**
Report noted.
5. **Highways and Byways – DECISION**
- 5.1 **Highways Improvement Plan.**
Nothing put forward.
- 5.2 **Junction 3 of the M2/Bluebell Hill**
The Clerk was asked to thank Helen Whately for her letter. Concern was expressed over National Highways lack of concern over the impact of Lower Thames Crossing on the A229 and Junction 6 of the M20. Cllr Brindle would contact her aide to see if she would be happy with BPC forwarding a copy of her letter to Tristan Osborne.
- 5.3 **A249 Bearsted Road Major Infrastructure Project.**
No update for this agenda.
- 5.4 **Boxley Village**
It was agreed that the Clerk could send the traffic data to the resident who had requested it.
- 5.5 **Lower Thames Crossing update**
Report noted.
- 5.6 **A229 Bluebell Hill Road Improvements**
It was agreed that this item should include M20 Junction 6 in future Agendas.
- 5.7 **Any Highways issues raised at the meeting**
Cllr Brindle had attended two recent police surgeries and found out that Boxley has several approved Speedwatch sites. The police also have Speedwatch equipment that can be used by trained people for Speed monitoring. An email will be sent to Councillors to see who would be interested in the training. An email would be sent to Councillors to gauge interest in training.
- 10 **Lidsing**
Cllrs S Thompson and V Jones had taken Kent County Council representative, Spencer Dixon on a tour of the site and surrounding area pointing out areas of concern that they would like raised at the KCC meeting scheduled for 22 July 2025. They also provided a list of questions for the cabinet member for highways at KCC.
- 11 **Sandling**
The Clerk would chase for the quotation for the improvements to the shared use path.
- 12 **Policy and Procedures Review**
None on this Agenda.
- 13 **Task List**
Noted.
- 14 **Members and Officer's Reports**
There would be a meeting of the Community Governance Working Group on the 18th July at 3pm at Beechen Hall. Cllr Thompson had been in communication with members of Thurnham Parish Council on Boxley's behalf with a view to a joint approach. Thurnham PC felt that it was important that their residents were consulted independently of Grove Green residents.
- 15 **Residents' Concerns**
Cllr Adams had been contacted by a resident regarding the safety of Grovewood Drive South. The Clerk would chase for a date for the Safety Audits.
- 16 **Volunteer Groups**
The Friends of Weaving Heath were installing a new bench.
- 17 **Items for Next Agenda**
None put forward at this meeting.

- 18 **Next Meeting**
Next Environment Committee meeting 11 August 2025.

In view of the confidential nature of the item about to be transacted, it is advised that the public and press were excluded from the meeting for Agenda item 18.

- 19 **Enforcement and CIL/Section 106 updates from MBC**
Noted. It was agreed at Cllr English's recommendation that Cllr Thompson would contact Carole Williams at MBC and get a breakdown of the CIL available to BPC.
- 20 **To Appoint Representative(s) to represent Boxley Parish Council at a meeting with the STEM school regarding their travel plan on Thursday 24 July 2025**
Cllr S Thompson said that the meeting was actually on the 17th July at 2pm. Cllrs S Thompson, P Mclean and A Adams would attend on BPC's behalf.
- 21 **Medway Local Plan**
Cllr Brindle said that under the Duty to Co-operate statement Medway were looking for funding for the new secondary school from the Lidsing Development Section 106 fund. Cllr Brindle thanked Cllr R Dines for the report he had produced on the Medway Regulation 19 consultation. The Clerk was asked to draft the Regulation 19 response. She would co-ordinate with Cllrs R Dines and A Brindle on this. The Clerk was requested to find out when the consultation ended.

Meeting closed at 9.15 pm

Signed as a correct record of the proceedings.

Chairman Date

Item 6. Planning Applications

25/50359/TPOA Beechen Hall, Boxley Parish Office, Wildfell Close, Boxley, Kent, ME5 9RU

Tree Preservation order proposal application to pollard oak tree with over 90% of crown die back to a height of approximately 7m and dismantle and fell the adjacent Field Maple. This is not on BPC owned land and is being made by KCC.

25/503299/TPOA 5 Ploughmans Way, Boxley, ME5 9DE

TPO application to one Ash Tree to prune branches from 20m to 10m to try to promote more new growth and to stop the current branches damaging the roof in the house which they are currently touching.

25/503651/TPOA 10 Round Wood Close, Walderslade, Kent, ME5 9UL

Tree Preservation Order application: T1 Oak - Manage the tree under a cyclical pruning programme. Crown reduce the height by 3m from 18m to 14m, and width by 3m from 17m to 14m spread and remove any dead wood and all epicormic growth to manage the size and maintain a healthy growth.

The term Cyclical pruning programme includes the following:-

An annual visual tree assessment to check the structural integrity of the tree to ensure it is safe in the garden location.

Remove any deadwood that appears

Crown thin after possibly two or three years to allow light and air into the crown to maintain the trees health. An application would be make at that point.

Crown reduce again after three to five years depending on how the tree responds to the reduction. A longer time if necessary, if the growth is slow for instance.

The aim is to preserve, maintain and keep safe the mature Oak in the family garden setting.

25/503592/TPOA 15 Podkin Wood, Walderslade, Kent, ME5 9LY

TPO Application to reduce the lateral growth of 1no. Chestnut tree (T001) remove 4m of lateral growth, reduce height by 2m and remove lower branches to clear main stem to 7m. To reduce

lateral growth of 2no. Oak trees (T002_Oak1 and T002_Oak2) by 2m, remove 4m of lateral growth circumference, reduce height by 2m and remove lower branches to clear main stem to 6m. Remove all arisings from all three trees.

25/503618/NMAMD Keswick Orchard Drive Weaving Kent ME14 5JG

Non material amendment to application 21/506745/FULL for the relocation of the wood burning flue to the South East elevation.

25/503584/SUB Blackthorn House The Nursery Bredhurst Kent ME7 3BJ

Submission of details pursuant to condition 8-(foul sewage treatment) 9-(decentralised and renewable or low-carbon sources of energy) subject to 23/505646/FULL

Item 7. Ratifications

25/503019/FULL 14 The Hedgerow, Weaving, ME14 5TG (11/8/25)

Demolition of rear conservatory and erection of single storey rear extension with external alterations, including insertion of new side windows and doors. (previously approved 22/500804/FULL)

Boxley Parish Council has no material planning reasons to object to this application.

25/503090/TPOA East Lidge, New Cut Road, Kent, ME14 5PT (15/8/25)

Tree Preservation Order application: Beech Tree – reduce and reshape by approximately 2m forming a more compact canopy. Current height of the tree is 16m and the current spread is 14m. After the works are concluded tree would be 14m in height with a spread of 12m.

Boxley Parish Council defers to the view of the Tree Officer.

25/502853/FULL Landaviddy, Boxley Road, ME5 9JD (15/8/25)

Single storey rear extension to be built with SIPs (structural insulated panela) over reinforced concrete slab. Installation of access and windows to side elevation.

Boxley Parish Council has no material planning reasons to object to this application.

25/503205/TPOA 19 Orbit Close, Boxley ME5 9NF (25/8/25)

Tree Preservation Order (1 of 1969) application – Reduce T1 Hornbeam from H14 5n 5e 5s 4w to H10 4n 4e 4s 4s. The tree has had previous reductions to this point and has had 3 stems removed to the base. There is a minor amount of decay in the historic topping cuts and at the base where stems have been removed. Reduce east crown of 4 trees (G2) overhanging rear boundary of garden from 4m crown spread to 1m crown spread (the trees will be cut back to the boundary as much as possible without cutting the primary ascending stems)

Boxley Parish Council defers to the view of the Tree Officer.

25/503276/TPOA 33 Alexandra Glen, Walderslade, ME5 9EB (27/8/25)

Tree Preservation Order Application: T1 Sweet Chestnut – reduce/pollard. reduce crown by 4m. crown height from 18m to 14m. crown spread from 12m to 8m.

Boxley Parish Council defers to the view of the Tree Officer.

25/503360/TPOA Vinters Park Crematorium, Bearsted Road, Weaving, ME14 5LG

Crown lift one Oak and one Sweet Chestnut to 6m to raise canopy above old building to enable safety work to the roof. Deadwood both trees.

Boxley Parish Council defers to the view of the Tree Officer

Item 8. Planning Decisions, Appeals and Appeals Decisions

25/502222/TPOA	Pegasus Place Lodge Road Boxley Kent ME14 5EH	TPO application to carry out works to the following trees (as detailed on Tree Safety Survey Report and updated application form): T014 - Fell to ground level (Section fell), T032 - Fell to ground level (Section fell) and remove failed stem, T050 - Fell to ground level (Directional fell), T051 - Fell to ground level (Directional fell), T061 - Fell to ground level (Section fell) all dead trees, T066 - Reduce crown by 1.5m and shape (remaining height at 16m, and remaining crown spread at 11m); Remove hanging/broken branch, T009 - Reduce crown by 1.5m and shape (remaining height left at 14.5m and remaining crown spread at 8m), T010 - Reduce crown by 2m and shape (remaining height left at 15.5m and remaining crown spread at 9m), T011 - Reduce crown by 2m and shape (remaining height left at 15.5m and remaining crown spread at 9m), T045 - Monolith to 6m from ground level, T053 - Remove hanging/broken branch, T064 - Fell to ground level (Section fell), T067 - Fell to ground level (Section fell), T031 - Fell to ground level (Section fell) and remove failed stem, T047 - Remove hanging/broken branch, T048 - Reduce crown by 2.5m and shape (remaining height left at 14m and remaining crown spread at 7.5m), T049 - Reduce crown by 2.5m and shape (remaining height left at 15m and remaining crown spread at 8m), T059 - Remove dead wood over 50mm in diameter from all trees in group, T060 - Fell to ground level (Section fell), T062 - Monolith to 6m from ground level, T063 - Monolith to 6m from ground level, T065 - Fell to ground level (Section fell), T075 - Fell to ground level (Section fell), T029 - Prune to clear street lamp by 0.5m, T052 - Fell to ground level (Directional fell).	Granted/BPC did not object
25/502387/FULL	The Old Vicarage The Street Boxley Kent ME14 3DX	Demolition of existing garage/garden store building and erection of replacement garden room/annex building ancillary to the main dwelling.	Granted/BPC did not object
25/502386/FULL	The Old Vicarage The Street Boxley Kent ME14 3DX	Erection of a detached two-bay open garage	Granted/BPC did not object

Item 9.2 Junction 3 of the M2

No update available for this Agenda.

Item 9.3 A249 - Bearsted Major Infrastructure Project

Below is the latest update on the scheme. This was circulated to residents on the 4th August.

A249 Bearsted Road Improvement Scheme



Newsletter August 2025

Why are we doing this work

The A249 Bearsted Road forms part of the key route to accommodate traffic for Maidstone town centre, whilst forming a vital link between residential areas, local schools and businesses.

Motorists using this route will be familiar with the extreme pressure the highway network is under through this corridor, resulting in regular congestion and delays throughout the day.

Pedestrian routes through this corridor have gaps in provision, discouraging many from leaving their car at home for local journeys.



Traffic on Bearsted Road looking west

This improvement scheme aims to ease congestion, reduce idling traffic, improve traffic flow and accommodate increased trips associated with the growth at the Kent Medical Campus, Eclipse Park and developments in the town centre and south Maidstone. The increased capacity will also make it easier to carry out future routine maintenance with significantly less disruption to the travelling public.

What the scheme involves

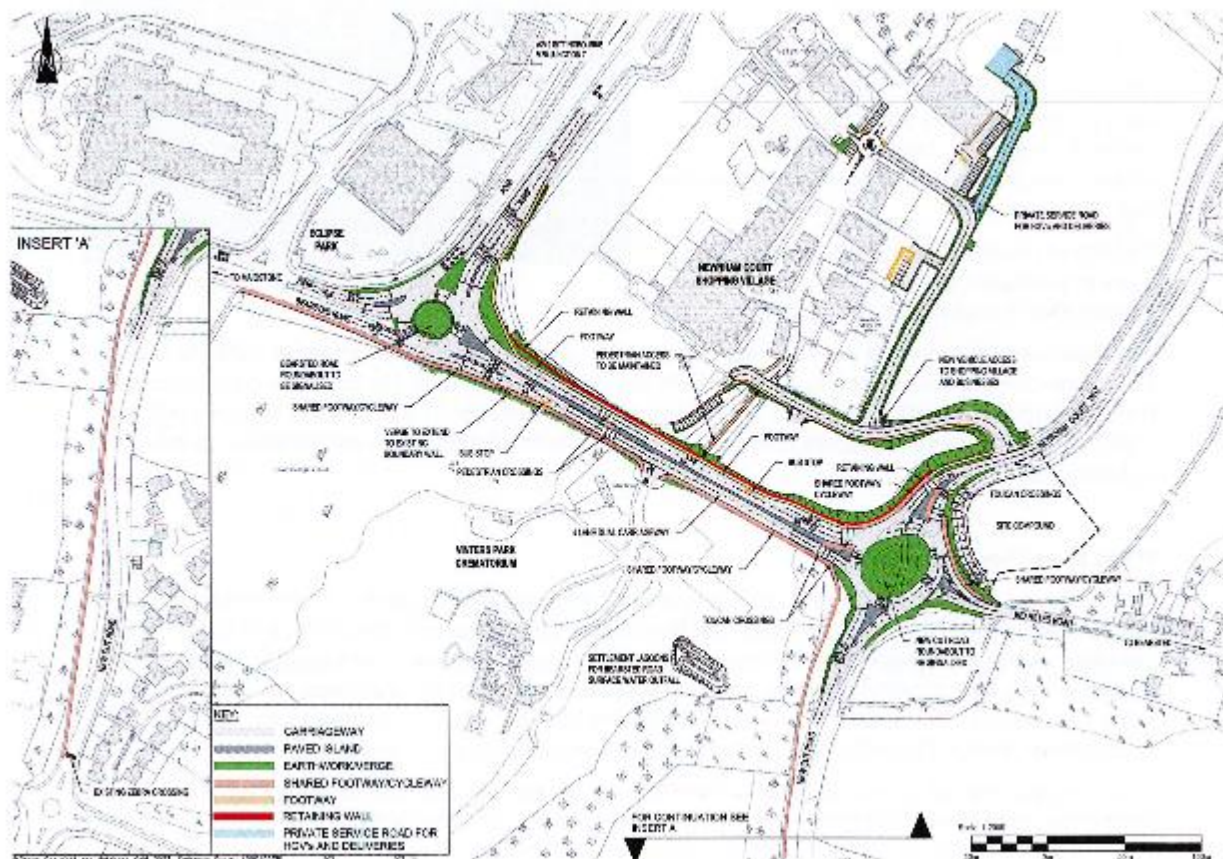
The Bearsted Road Improvement project upgrades and signalises both the A249, Bearsted Road roundabout (adjacent to Eclipse Park) and New Cut Road roundabout whilst the link road between will be increased to a four lane dual carriageway, maximising the capacity within the available land, by installing retaining walls. The selected finish to the walls has been chosen to reflect the historic character of the existing ragstone boundary of The Crematorium, using a sympathetic design that follows a similar approach previously used in Mote Park.

The current vehicular entrance to Newnham Court Shopping Village will be converted to a pedestrian access with vehicles re-routed to a new access road that will join Newnham Court Way. The Crematorium entrance will be maintained at the same location.

A new shared footway/cycleway will be added on the south side of Bearsted Road, providing a continuous, safe link between residential areas at Vinters Park and Grove Green. The existing footway route on New Cut Road will be retained, minimising the number of mature trees affected. The pedestrian crossing at The Crematorium will remain, but will be a two stage crossing to reduce delays and minimise the impact on traffic, along with additional controlled crossing points as part of the new traffic signals at New Cut Road roundabout, allowing better links to the local retail outlets and amenities.



Funded by
UK Government



When the work will happen

The £10.8m contract for the construction has been awarded to Breheny Civil Engineering Ltd., with a start date of Monday 18th August 2025, and an anticipated duration of 15 months, taking the works through to the end of 2026. The first stage of work will involve setting up site offices to the east of Newnham Court Way and construction will begin offline to create the new access to the shopping village, excavate and install the eastern retaining wall and prepare the area for constructing the additional carriageway.

How will we keep traffic moving

Disruption during construction was a significant concern raised during the public engagement. The design of the scheme allows much of the work, such as the retaining walls and northern carriageway, to be carried out offline. Crucially, the additional carriageway can then be used to carry traffic whilst work is undertaken on the existing road. This approach means the current road capacity can largely be maintained for long periods during the construction works.

There will be times when temporary traffic signals are required, particularly where drainage and utility ducts need to cross existing traffic lanes, or at tie-in points. These will be kept to a minimum wherever possible.



Traffic at the Bearsted Road roundabout

A Temporary Traffic Regulation Order (TTRO) will be in place to allow for various road closures throughout the works. Most closures will take place overnight to minimise disruption. However, Bearsted Road from the New Cut Road roundabout through to Hockers Lane will need to close for a period to allow Openreach to complete ducting and cabling links into their existing network. These are essential for the safety of our workforce and the travelling public. We will maximise the work undertaken during these periods to reduce the need for further closures.

All major traffic management changes and road closures will be clearly advertised in advance.

Construction sites inevitably cause disruption but we will work to keep this to an absolute minimum. Your patience and understanding is greatly appreciated.

Contact information

For day to day queries during construction, the main point of contact will be the team on site:

Email: Bearstedroad@breheny.co.uk

Phone: 07976 367359

Kent County Council's contact channels will remain available for general enquiries about the scheme.

Copyright: © 2025 Kent County Council All rights reserved

E-mail: bearstedroad.majorproject@kent.gov.uk

Website: www.kent.gov.uk/bearstedroad

Telephone: 03000 418181

Item 9.4 Boxley Village

Traffic Surveys

Suggested Job Specification for a quotation for Executive Summary of traffic survey data.

Hourly peak hour directional flows (normally 8-9am and 5-6pm) and daily flows.
Map based summary in addition to spreadsheets and summary tables.

Use the Data from the 11 Boxley Parish Counters and 2 Bredhurst Parish Counters to give an executive summary that can be used by both Councils.

Comparison with previous years data.

Item 9.5 Lower Thames Crossing Update

Following formal approval in March 2025, the Lower Thames Crossing project is progressing toward construction. This £9bn+ infrastructure scheme aims to create a new 14.5-mile road—including the UK's longest road tunnel—linking the A2/M2 in Kent with the A13/M25 in Essex. Construction is expected to begin in **2026**, with completion estimated between **2032 and 2034**.

Key Points for Boxley Parish Council:

- **Planning Consent Granted** (March 2025)
- **Funding:** £590m additional government funding committed; full financing package in development.
- **Construction Timeline:** Start in January 2026, 6–8 year build period.
- **Environmental Mitigation:** Includes new woodland planting, green bridges, and low-carbon construction; concerns remain from environmental groups.

- **Local Impact:** Traffic redistribution may ease Dartford congestion but increase pressure on connecting routes. Ongoing monitoring advised.

Item 9.6 A229 Bluebell Hill Road Improvement Scheme/Junction 6 of the M20

Highway Works in Your Area

A229 Blue Bell Hill Improvement Scheme



What we plan to do:

As part of the proposed A229 Blue Bell Hill Improvement Scheme, AECOM, working on behalf of Kent County Council will be undertaking essential intrusive investigation surveys on the A229 Blue Bell Hill and surrounding roads. The purpose of the surveys is to gather data on the ground conditions and existing assets such as drainage and utilities to inform the development of the design for the scheme.

When we plan to carry out the work and how long it will take:

The works will start on 15th September 2025 and last for approximately 12 weeks in total. However, we plan to carry out the majority of the works using lane closures in a phased approach to minimise the impact. As a result, each individual lane closure will be in place for a maximum of 3 weeks.

This type of work can be affected by bad weather and unforeseen circumstances, but we will make every effort to complete the works on time.

To reduce the impact on road users, the works have been carefully planned to minimise disruption where possible. This includes:

- Survey teams operating at multiple locations simultaneously,
- Using extended working hours, including overnight operations where necessary,
- Making use of existing lane closures from other projects, and
- Using historical data to limit the works required.



There will need to be a full road closure of the A229 Maidstone bound off slip to Lower Warren Road/Rochester Road. This will be night time closures only for a total of 12 of nights. Access to Lower Warren Road and Rochester Road will be maintained during the closure via a U-turn at Cobtree roundabout.

For the safety of the teams carrying out the works, a temporary speed limit of 40mph will be in place on the A229 between Lord Lees and Cobtree roundabouts, but only while lane closures are in place.

Vegetation will need to be cleared to access some survey sites. This will be kept to a minimum, and all activity will be carried out in consultation with an ecologist to protect local wildlife.

How you can help:

It is inevitable that road users and residents and businesses near the works will experience some disruption. We apologise in advance for any inconvenience caused and will try to keep this to a minimum. Access to properties will be maintained but may be restricted during lane closures. Advance notice will be given. If you have any particular access needs, please let the workforce know.

More details regarding each individual lane closure can be found on One.Network (www.one.network/uk/kent). Regular updates will also be provided via KCC's social media channels. You can also visit our website www.kent.gov.uk/a229bluebellhill for further information.

For your safety and the safety of our workforce, please drive carefully and slowly through the Roadworks

kent.gov.uk

The planned lane closures will take place at the following locations:

Location	Works start week commencing
A229 Blue Bell Hill (Northbound)	15 th September 2025
A229 Blue Bell Hill (Southbound)	15 th September 2025
Lord Lees and Taddington Roundabouts	22 nd September 2025
A2045 Walderslade Woods Road	22 nd September 2025
Bridgewood Roundabout	29 th September 2025
B2097 Rochester Road	6 th October 2025
M2 London bound (after Junction 3)	13 th October 2025
M2 Coast bound (before Junction 3)	13 th October 2025
Old Chatham Road	13 th October 2025
Buckmore Park Kart Circuit Road	27 th October 2025
Running Horse Roundabout	3 rd November 2025

kent.gov.uk

Item 10. Lidsing

Verbal update to be given at the meeting.

Item 11. Sandling

The following proposal has been received from the Active Travel Team at KCC following a site visits on the 15 April and 29 May 2025. Present at the site visits were the Clerk, Cllrs Akehurst and Brindle and a member of the public. The Team said that if BPC could match fund or part fund the scheme they would be able to apply for grants from their fund for the remainder of the cost. A figure of £40,000 was put forward (to come from BPC's Highways Improvement Fund currently at £97,078.16). The Team were aware that this figure was put forward to get the process started and was made without any commitment or approval from BPC. They have now come up with designs for the scheme and are confident that if BPC does contribute £40,000 then they can get a grant for the remaining £80,000 cost. A decision now needs to be made on committing the £40,000 from the BPC Highways Improvement Fund to enable the scheme to go ahead.

Apologies for the late response in trying to send you something over, we have been trying to put together a bid for funding as you will remember, and although we will not get confirmation until early next year, we are confident we can complete the scheme.

I have been on many site visits now with my colleague Stuart and had a look at what we feel we could get funding for under the Active Travel England funding, alongside the funds you said were available.

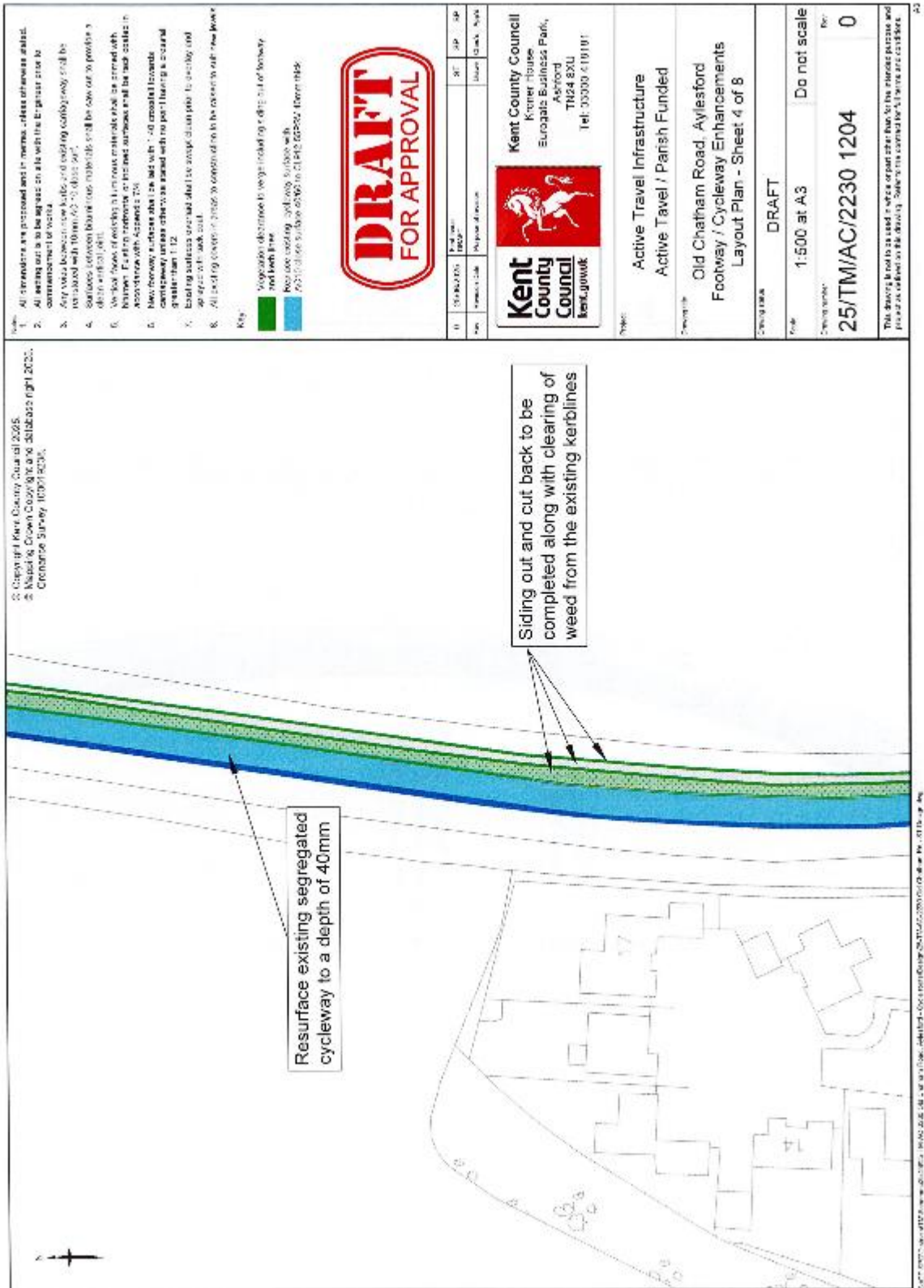
You will see from the design attached this is quite extensive, but in order for this route to comply with current standards and meet the requirements you set out I'm hoping you will agree with what is proposed.

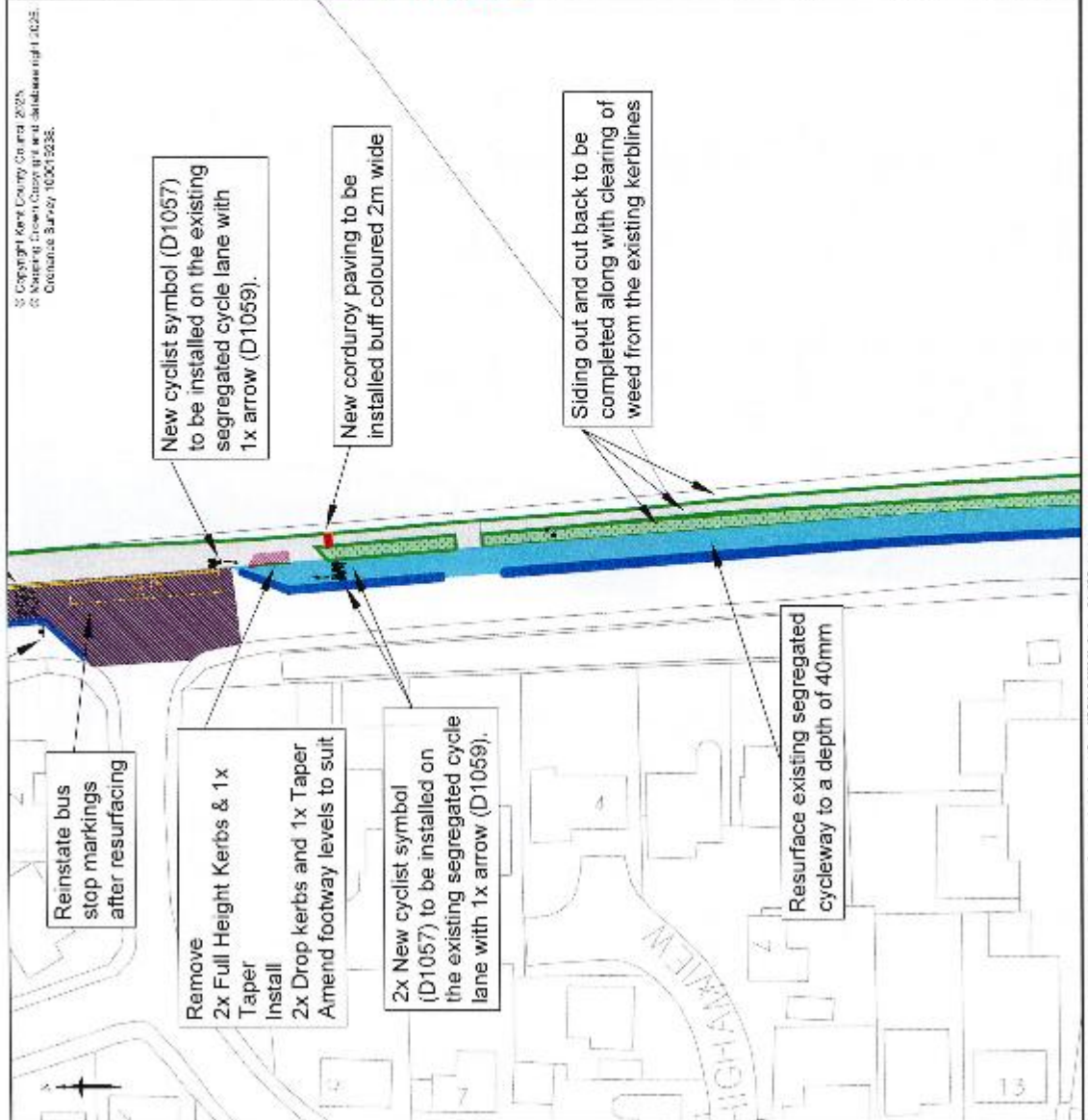
When looking at the design you will see that the majority of the new cycle lane is to be resurfaced, which of course has cost implications, but felt this was needed to make the route better to ride. We have also added in the resurfacing of the junction with the Tollgate Way, again this is cost dependant. If for any reason we do not get the funding this will have to be removed.

I think the rest of the design is self explanatory, but I am of course happy to either meet again or have a Teams call to discuss further, and if your funding is available sooner, we could make a start on this prior to the winter setting in.

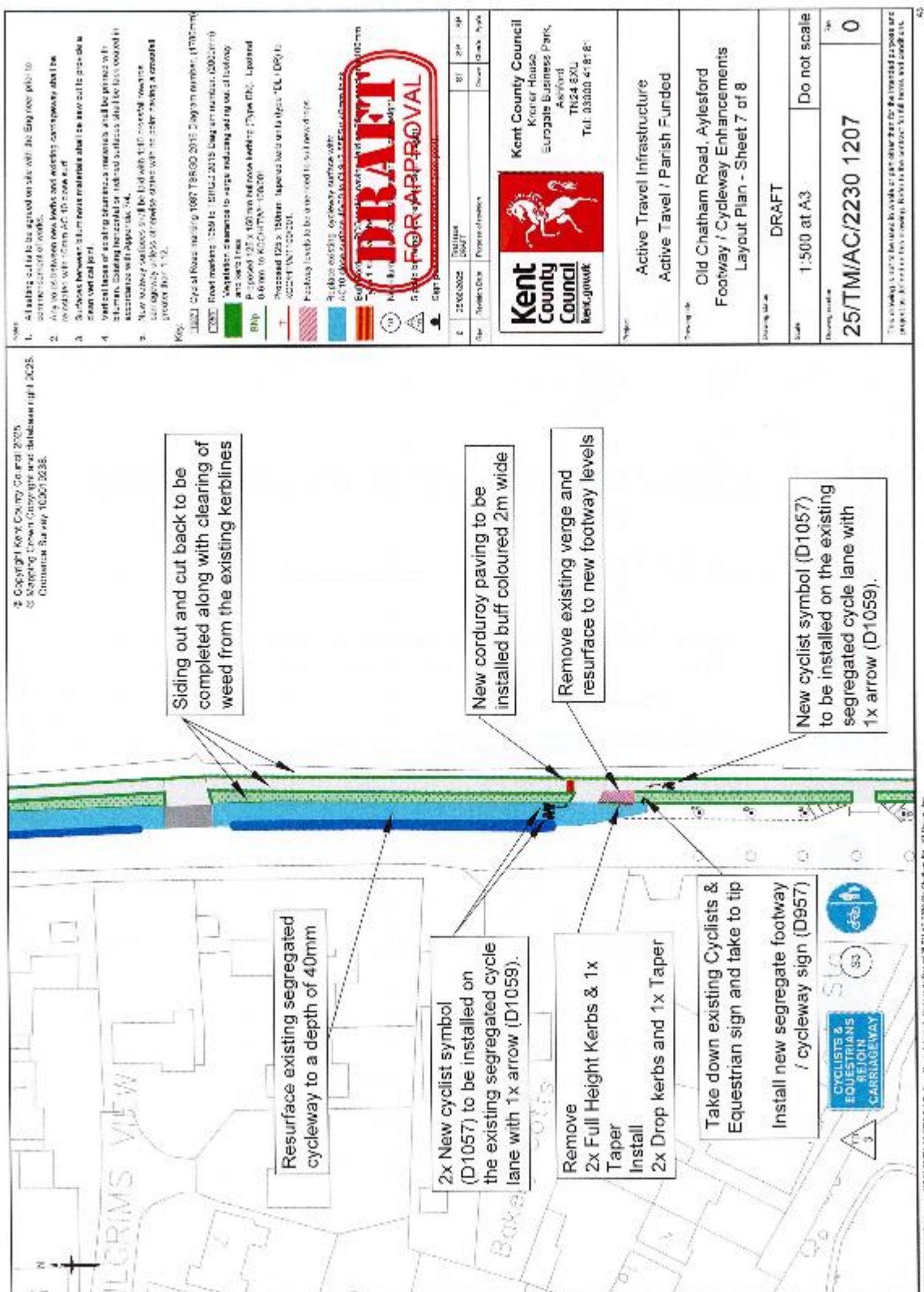
If you would like a cost breakdown, we can of course provide that, but currently we are looking at a total scheme cost totalling around £150,000. We have applied for funding of £80k and with your £40k this will total £120k so we are short some which we are happy to discuss what you would like to remove to fit the budget unless like you said previously you may be able to get funding for surfacing.

I look forward to hearing from you with your opinions and thoughts so we can commence the works.





Notes:	<p>1. All elements are proposed and are subject to approval by the Kent County Council.</p> <p>2. All existing features to be retained are shown in black.</p> <p>3. All new features are shown in red.</p> <p>4. All new features are shown in red.</p> <p>5. All new features are shown in red.</p> <p>6. All new features are shown in red.</p> <p>7. All new features are shown in red.</p> <p>8. All new features are shown in red.</p> <p>9. All new features are shown in red.</p> <p>10. All new features are shown in red.</p>			
Legend:	<p>Proposed Cycleway</p> <p>Proposed Footway</p> <p>Proposed Kerb</p> <p>Proposed Tarmac</p> <p>Proposed Grass</p> <p>Proposed Trees</p> <p>Proposed Fences</p> <p>Proposed Signs</p> <p>Proposed Lights</p> <p>Proposed Other</p>			
Project:	<p>Active Travel Infrastructure</p> <p>Active Travel / Parish Funded</p>			
Client:	<p>Kent County Council</p> <p>Kent County Council</p> <p>Eastgate Business Park,</p> <p>Ashford</p> <p>TN24 8XU</p> <p>Tel: 03300 418181</p>			
Drawings:	<p>Old Chatham Road, Aylesford</p> <p>Footway / Cycleway Enhancements</p> <p>Layout Plan - Sheet 5 of 8</p>			
Scale:	<p>1:500 at A3</p> <p>Do not scale</p>			
Drawings:	<p>25/TM/AC/2230 1206</p>			
<p>This drawing is the property of Kent County Council and is not to be reproduced without permission.</p>				



Item 13. Parish Tour

Responses have been received from 10 Councillors so the tour will go ahead on the 18th October. It will start and finish at Beechen Hall and is likely to start at 9am and finish at 4pm. Last year we hired a minibus for the tour and stopped for a buffet lunch at the Newnham Court Inn. Cllr Jones has suggested using private cars and not stopping for lunch. The minibus would cost £690-895 depending on size. Last years buffet was £7.50/head including tea and coffee.

Item 14. Milestones - Item from Cllr Brindle

Roads to the East of Maidstone and their milestones.

Until the early 19th century the main highway from Maidstone to Ashford, shown in red on the map, went via King Street before turning northeast to follow the line of Queen Anne Road. It then headed north along what is now the Sittingbourne Road as far as the Chiltern Hundreds before heading eastwards through Bearsted and Roundwell.

After crossing what is now the Ashford Road it went south past Nether Milgate before heading east to cross Caring Lane, White Heath and on to New England.

A. At the time Caring Lane went south from Crismill before heading westwards and then south again past the Fulling Mill.

B. The road to Milgate was later closed to the public, most likely when Lewis Cage lived at Milgate, and the southern section of Caring Lane was realigned as a continuation of the northern section. This realignment removed the southern section from within the Milgate estate.

C. The area of New England contained an inn known as the Old England but this was demolished in 1960 to make way for the Maidstone Bypass. Old England Cottages were immediately to the east of the inn and survive to this day as a single dwelling.

A second more tortuous route, shown in blue, went eastwards from Wrens Cross and passed through what is now Mote Park. Passing to the south of Turkey Mill the road then swung south before heading to the northeast through Madginford. It then went north and then east through Otteridge, at the bottom of Yeoman Lane, and continued across Otham Lane to join the northern route.

On May 4th 1814, during the reign of King George III, an Act was passed-

"for repairing the Road from Barrow Hill in Ashford, to a Place called New England, in the parish of Hollingbourne, and for making a new Road thence to East Lane, in the Town of Maidstone, all in the County of Kent"

Two options for a new route had clearly been considered before the Act was passed and a map, originally created in 1797, was marked by hand to show them. This map is held in the British Library.

The first option, shown in green, involved constructing five section of new road to straighten out some sections of the southern route.

The adopted option, in yellow, utilised the two sections of existing road by Otteridge and New England. In addition a new section was added to the east and which started near the turning to Leeds village. Two secondary roads were added, shown in Cyan-Square Hill (C) and Willington Street (D)

On the map below-

D. The road once known as East Street, which ran from the bottom of Queen Anne Road to what is now the bottom end of the Sittingbourne Road, which is now part of the Ashford Road.

E. Wrens Cross

E. The old Turnpike Road to Detling and on to Milton Regis.

The Act of 1814 also stated that when the new road was completed-

The Two Mile Milestone

Location Within Boxley Parish and to the north of Bearsted Road approximately 35 metres west of the Hockers Lane junction.

Condition Well worn and defaced



Markings None visible on initial inspection Risk of loss High

Research

From the earliest OS map available online, which was surveyed in 1865/7 and published in 1870 it is marked as a "Stone".

Although "Boundary Stones" became "Stones" on OS maps if boundaries were moved this stone has never been on a boundary.

The same OS map shows a 1 mile Milestone on the Sittingbourne Road.

The two locations are just over 1 mile apart when measured along a realigned road and having negotiating three roundabouts.

The stone in question would have been the two mile Milestone on the old route from Maidstone to Ashford via Bearsted.

By the time the OS was surveyed it was redundant as the "new" Ashford Road from the top of Square Hill to Hollingbourne, constructed in 1814/16, was in use.

When the survey was undertaken in 1865/7 it had become irrelevant as a Milestone and therefore defaced





Item 15. Speedwatch

Cllr Brindle has spoken to Kent Police and BPC can hire speed watch equipment to run a scheme. People will need training to operate the equipment but there are several sites in the parish that would be suitable for a scheme. BPC still has the signs and new equipment can be purchased for £516.50 for a starter kit. We would need to ensure that anything purchased is approved by Kent Police. If we wish to start a scheme the Clerk can put out an advert asking for volunteers to operate the scheme and then training can be arranged.

Item 17.1 Members and Officers Reports

None received in advance of the meeting.

Item 18. Residents' Concerns

Email received 23/8/25

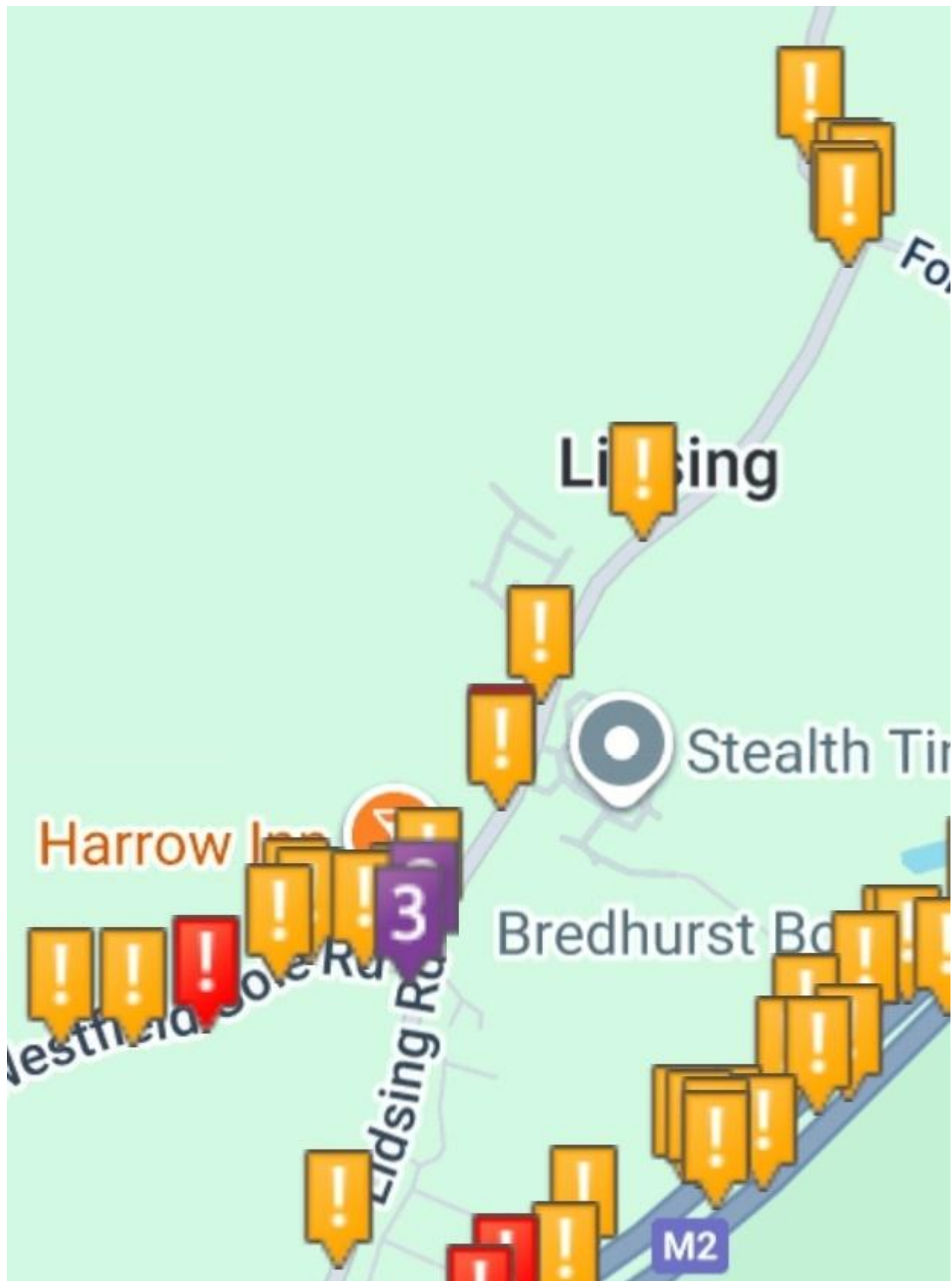
Good Afternoon,

I am emailing to request that the Parish Council looks into reducing the speed limit along Lidsing Road, Lidsing from where the junction with Forge Lane upto the motorway bridge past the junction with Westfield Sole Road.

The current restriction is 60mph as the 'National Speed Limit' applies. This is wholly unsuitable and unsafe for this strip of road which has a sharp bend and parts of the road which narrow so that 2 large vehicles cannot pass each other.

Vehicles travelling at the current speed also make it unsafe when the residents and businesses, some of which have farm vehicles, try to join the road.

I attach crash map evidence to show the high number of accidents which have occurred along this stretch of road.





Email received 14/7/25 and telephone call 8/9/25

Another complaint received about East Kent Recycling parking on Lodge Road. They are parking skips, skip trailers and lorries and transferring skips from vehicle to vehicle. Skips are leaking fluid etc onto the road. Cllr English was looking into this and looking at it from a

planning point of view. I am awaiting the outcome from him so that the resident can be updated.

Email received 10/9/2025

Hallo,

On too many occasions this year I have gone outside my house and noticed an immediate smell, not unlike walking into a transport depot, where motors are kept running to warm up. Sometimes I deal with it; sometimes it's wiser to go inside straight away and shut the windows. What is this stench? Is it harmful?

I understand from attending a meeting about the A229 works that Maidstone no longer monitors air quality on the M20 corridor. Whether it does or not, it would be good for the residents of Sandling to know that, stench or not, the air is scientifically measured as safe to breathe.

With regards

Item 19. Daffodil planting

The scheme was a success again last year. Prices for this year are £50 for 25kg of mixed bulbs. Last year we purchased 50kg.

Item 20. Volunteer Groups

The Friends of Weaving Heath have ordered 2 new benches for the Heath from their BPC Grant. These are being purchased and installed by MBC as they want them to match those already on the Heath. The invoice has been paid and the benches should be installed soon.

Item 23. Enforcement/CIL

CIL

BPC CIL balance £1,661.46.

Item 16. Task List September 2025

	Date	Parish Area	Road	Description	Current Status
1.	14/7/25	All	All	Cllr Thompson to contact Carole Williams at MBC for a breakdown of the CIL available to BPC	Awaiting update on this
2.	14/7/25	All	All	Medway Council's Local Plan. Clerk asked to draft the Regulation 19 response and circulate to Councillors for comment before submission.	Done and submitted
3.	14/7/25	South	Groveswood Drive South	Clerk to chase for a date for the safety audits	Awaiting date
4.	14/7/25	Sandling	Shared use path	Clerk to chase for quotation	On this Agenda
5.	14/7/25	All	All	Speedwatch.	On this Agenda
6.	14/7/25	North	A229	Update on impact of Lower Thames Crossing on A229 and Junction 6 of the M20 received from MP Helen Whately. Clerk to send thank you letter for update. Cllr Brindle to contact aide to see if she could send a copy to MP Tristan Osborne.	Thank you sent.
8.	23/6/25	North	Lordswood Lane/ Gleamingwood Drive	Various issues. Clerk asked to engage the traffic survey company to conduct a safety audit of this area.	In progress
10.	12/5/25	All	All	The Clerk was asked to circulate a new date for a Parish Tour to all Councillors with one date in September and one date in October.	Done – on Agenda
11.	14/4/25	North	Impton Lane	The Lack of a footpath at one end of Impton lane would be added to the HIP. The Clerk was asked to report this to KCC as a H&S concern and to try and ascertain if this should have been built when the houses were built.	In progress.
12.	13/5/24	All	All	Clerk to look at purchase costs for new speed watch equipment	On this Agenda
13.	8/4/24	Boxley	All	Request from some residents for permanent traffic lights. Clerk asked to look into commissioning a survey to go out to all residents.	No action taken to date.
14.	15/5/23	Grove Green	All	Complaint regarding white vans in Tesco car park transferring goods late at night causing a noise nuisance. Clerk asked to write to head office	Letter sent 24 May 23. No response received. Left as a watching brief 9/10/23.